

STEP 1

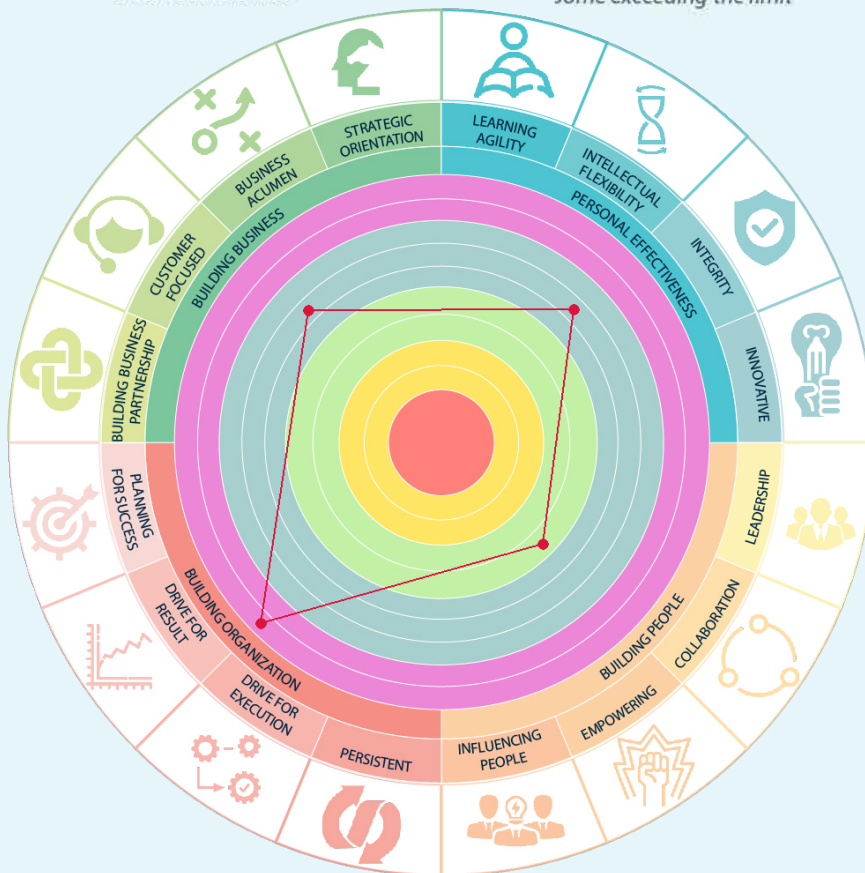


THE ORIGIN OF YOU

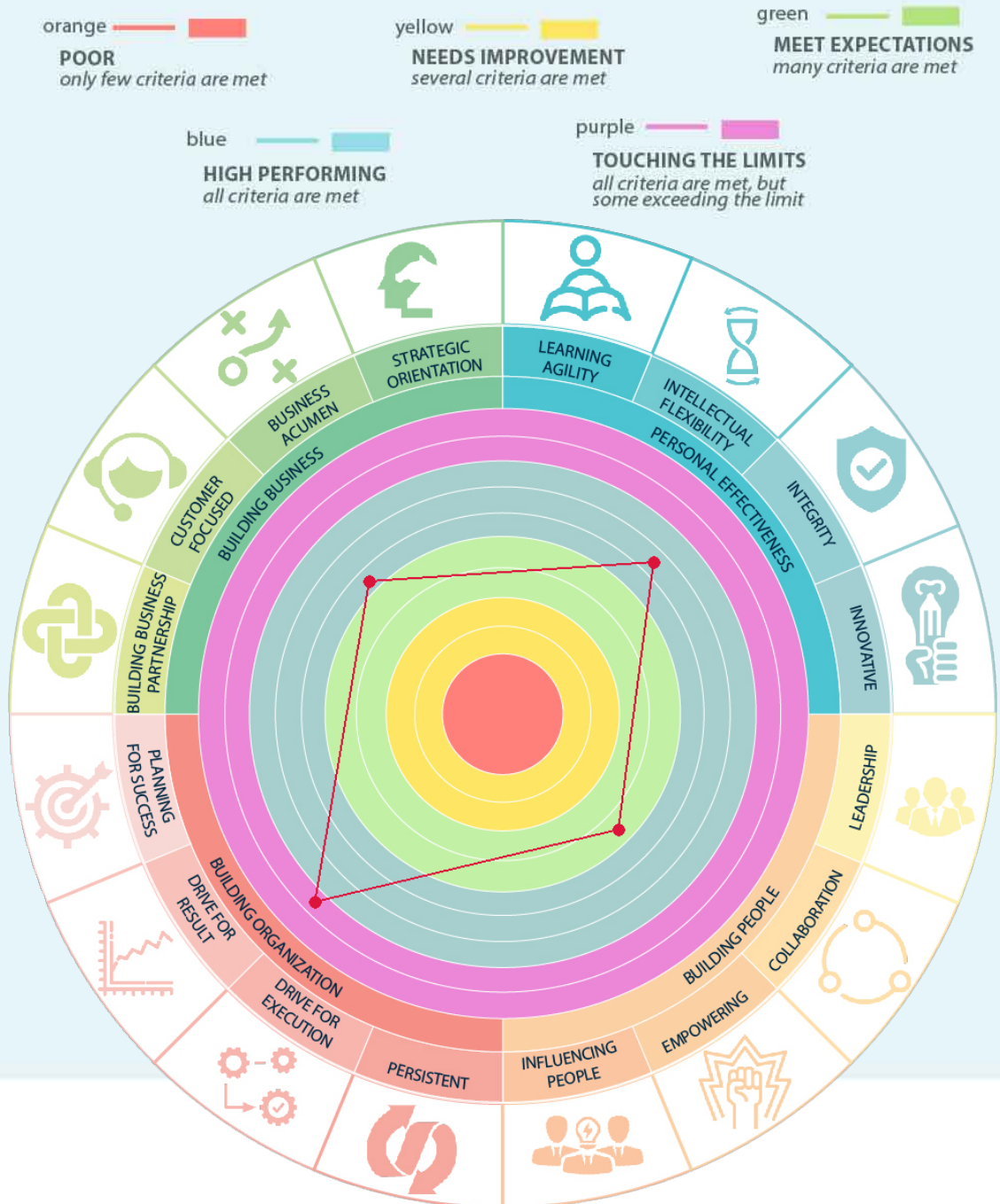
Tips on reading PRiADI test result

The HPI report addresses a person's competence in the capacity for technical and business work. The business side competency is slightly different compared to the technical side related to the need for communication skills and negotiations, while the majority of other competencies are relatively the same. (2) Pay attention to each color of the HPI "rainbow" disc. Each color shows the interpretation of HPI that a testee has.

For example, a testee falls on the "Second Blue" level regarding "Building People," this means that the person concerned is considered "having high competence related to building, empowering, and directing people in the organization effectively."



High Performance Index (HPI): Technical Competence



**High Performance Index (HPI):
Business Intelligence**